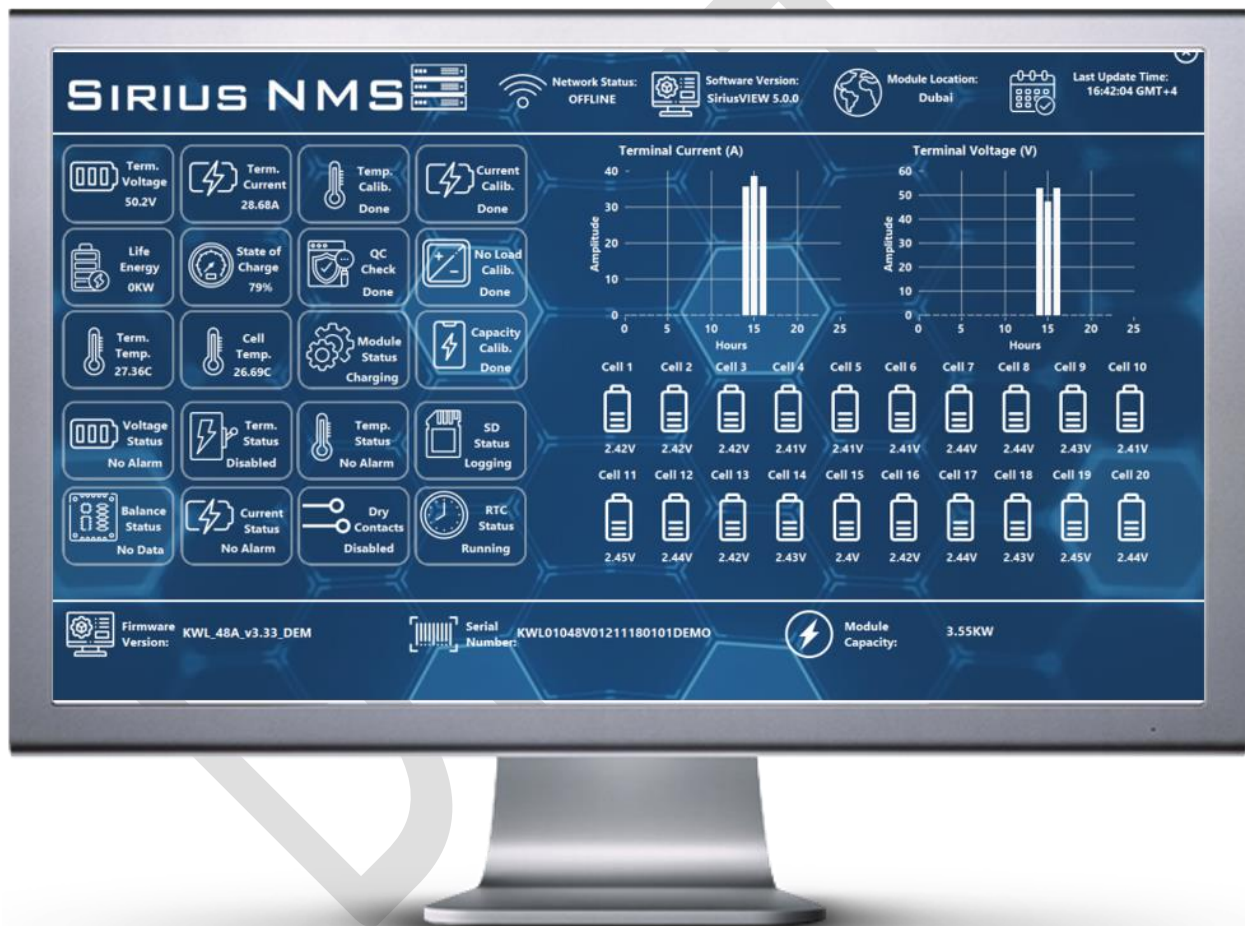


SIRIUS NMS

Next Generation Network Monitoring Software

User Manual



August 1 2020
KILOWATTLABS

Introduction

Sirius NMS (Network Monitoring Software) is developed for users;

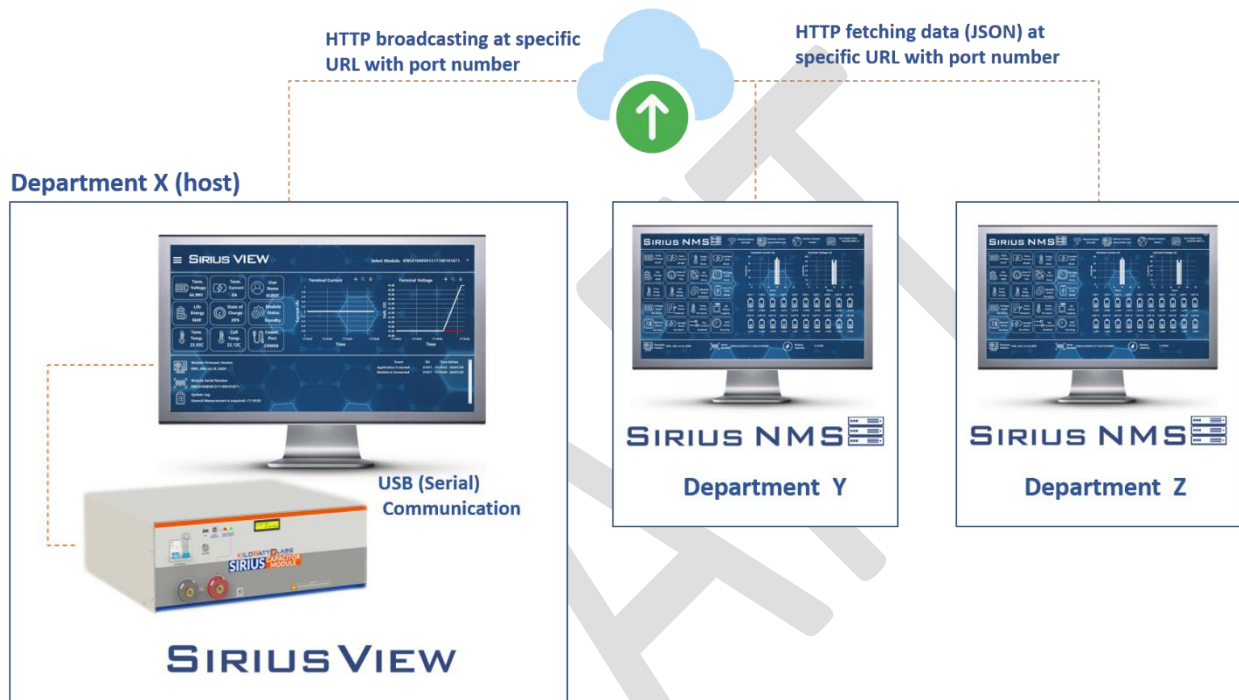
- Has multiple Sirius Energy Storage Modules in same network
- Has no internet access in network or no permission for internet access
- Need to monitor all the Sirius Modules in same network remotely from a different pc.

Sirius NMS Features

1. Monitor Sirius Modules which are located in same network seamlessly
2. All the details of the Sirius Modules will be represented in clean UI:
 - Terminal Voltage, Current, Temperature
 - Alarm Statuses
 - Cell Voltages
 - Daily Voltage and Current History Graphs
 - Firmware and Software details
 - Monitoring multiple modules in same network
 - Filter and identify modules as “Healthy”, “Faulty”, “Offline”
3. Multiple display resolution supported as 1366x768, 1440x900, 1536x864 and 1920x1080.
4. Compatible with Windows 7 and newer OS versions.
5. Compatible with Sirius VIEW 5.0.0 and later.

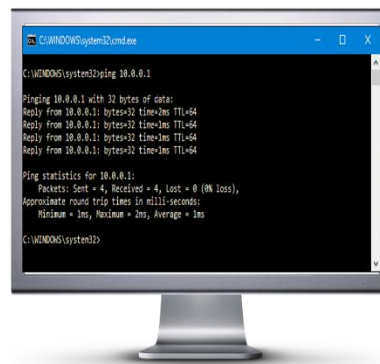
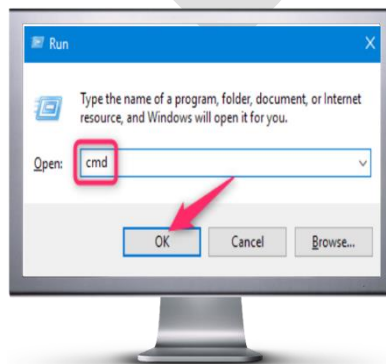
Getting Started to Sirius NMS

Sirius NMS is the software that, scans specific IP address in network to fetch Sirius Energy Storage Module Data. These data will be only published while SiriusVIEW application is already running. SiriusVIEW Application (version 5.0.0 and later) will collect all the module data and broadcast it as http service on same network. Scheme below will show the process for one host.



Network Configuration of Host PC

The PC executes Sirius NMS should be in same network with another PC executes SiriusVIEW Module Monitoring Software. For testing these PCs if they are in same network or not, user can run command screen and “ping” commands with related IP addresses



Installing Sirius NMS Installer and Required Drivers

Sirius NMS application requires drivers to communicate with webservices on specific IP address. These drivers can be installed by Sirius NMS installer published on [Amber&Waseem website](#).

Executing Sirius NMS Application First Time

After installation of Sirius NMS installer, Sirius NMS Folder which contains application will be appeared on desktop. User can double click on executable to run it.

Entering Sirius VIEW Host PC IP Address

As it is mentioned before, Sirius NMS application needs IP address of host PC which monitors Sirius Modules.

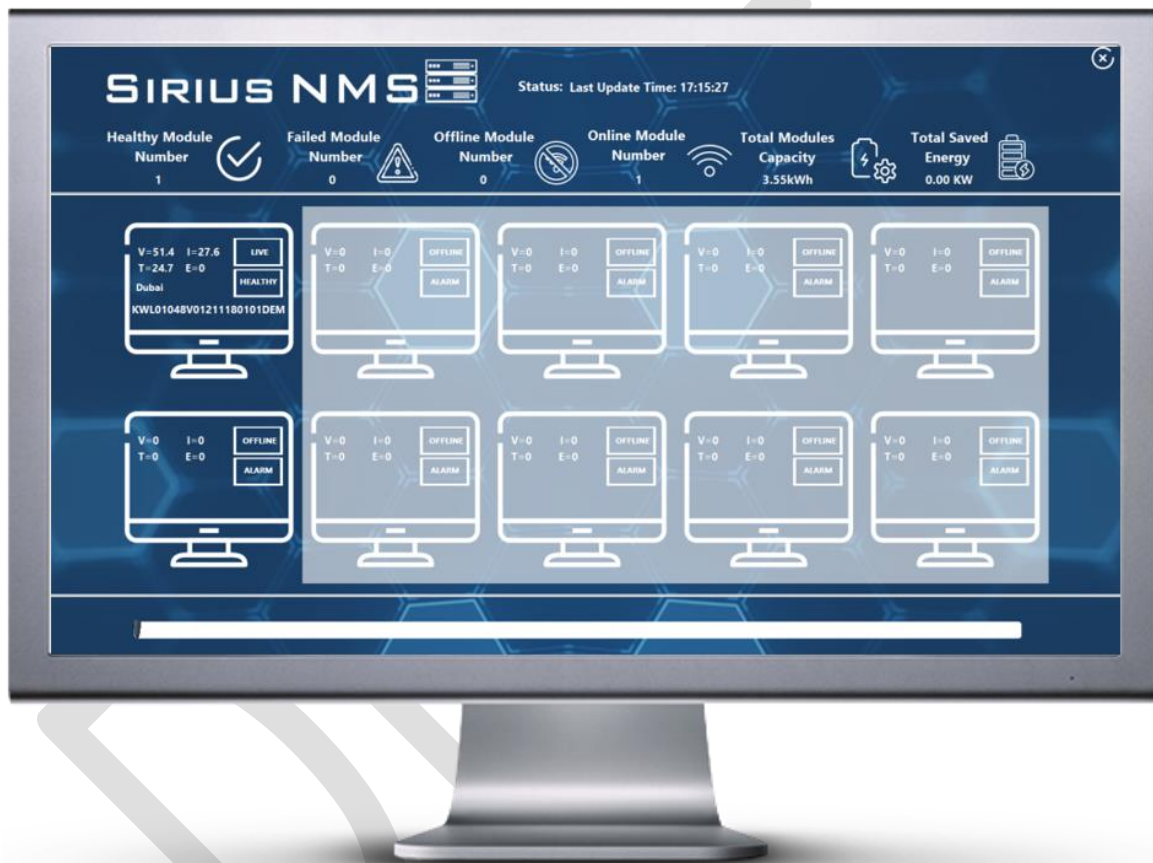


The screen above will appear whenever Sirius NMS application is executed. During run-time, if user wants to change IP address of host or wants to monitor different host, user just needs to press "ESC" button to call IP address entry window

Sirius NMS Overview Interface

Sirius NMS overview interface enables users to get dashboard related to all Sirius Modules in same network as:

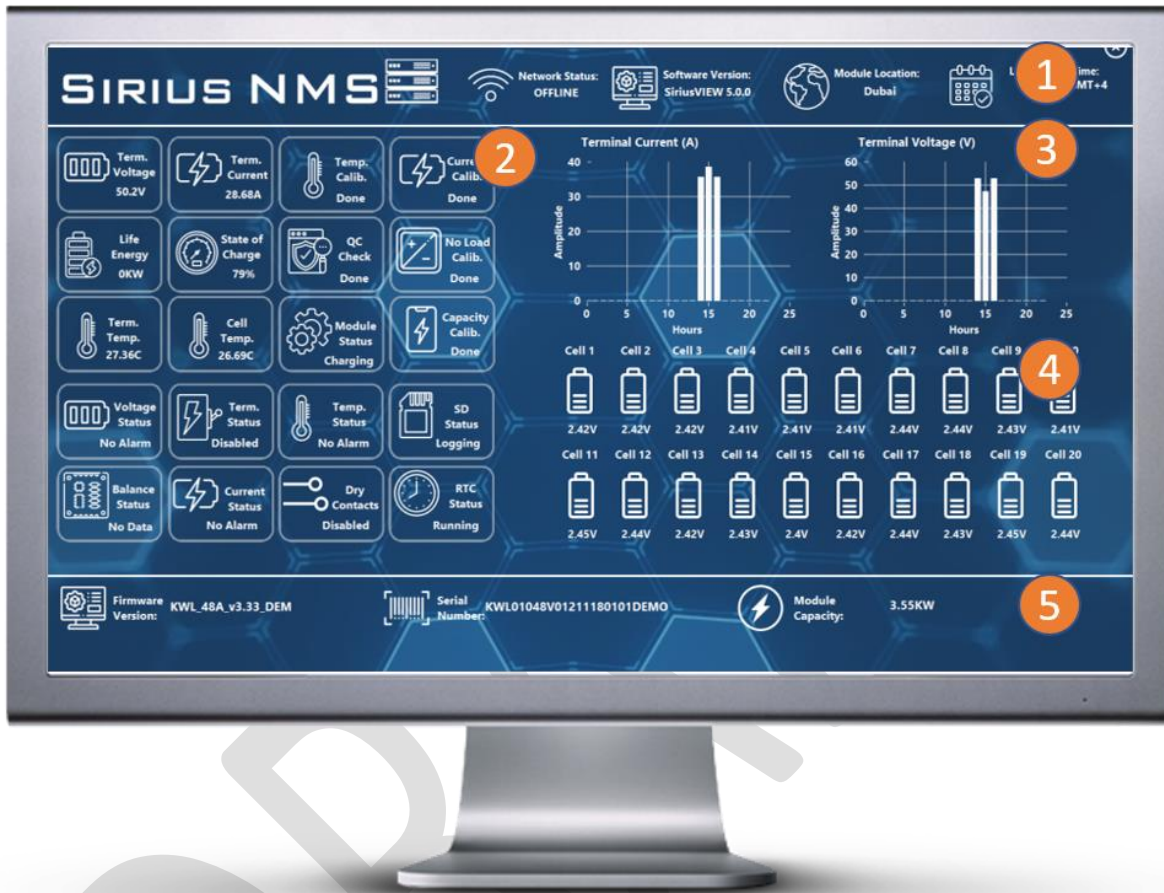
- Online /Offline Module Analysis
- Faulty/ Health Module Analysis
- Individual/Total Capacity of all system
- Vital measurements of individual Sirius Modules in same network



In this interface, if user wants to get further detail of any module on table, only left click on the table, it will open Sirius NMS monitoring interface for related serial number.

Sirius NMS Monitoring Interface

Sirius NMS monitoring interface is design to understand all the aspects of the Sirius Module at one glance. All the parameters and measurements will refresh in every 2 seconds



1. Module Identification Top Banner

This banner will inform user about basic information of Sirius Module as:

- Network Status
- Last update (entry) time of measurement
- Location of Sirius Module (In case usage of VPN)
- Software version of Sirius VIEW

2. Detailed Module Parameters Indicator

This indicator will show all the required measurements and parameters of Sirius Module as:

- Terminal Voltage, Current and Temperature measurements
- Terminal, Voltage, Current, Temperature Alarm Status
- Dry contact, Operation, SD Card Logging, RTC Status

3. Detailed Module Parameters Indicator

This indicator will show all the required measurements and parameters of Sirius Module as:

- Terminal Voltage, Current and Temperature measurements
- Terminal, Voltage, Current, Temperature Alarm Status
- Dry contact, Operation, SD Card Logging, RTC Status

4. Cell Measurements Indicator

This indicator will show all the individual cell voltages if module model is with cell monitoring feature.

5. Module Identification Bottom Banner

This indicator will show very vital information about module as:

- Firmware version
- Serial number
- Capacity